

APRIL 7, 1962

PORTUGUESE GUINEA

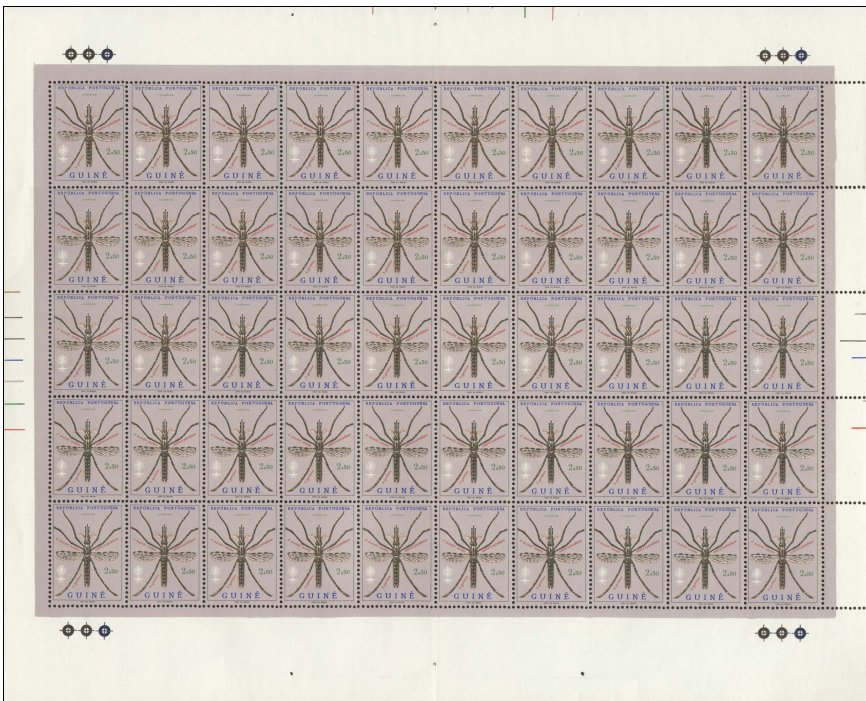
• 1962



*Description:* *Anopheles gambiae*  
*Designer:* José de Moura and Preto Pacheco  
*Design Size:* 23 x 31½ mm  
*Producer:* Casa de Moeda, Lisbon, Portugal  
*Process:* lithography  
*Format:* panes of 50 (10 x 5)  
*Selvaige:* background color extends 6½ mm into selvaige; 3 registration marks above positions 1.1 and 1.10 and below 5.1 and 5.10; colored lines centered at top, left, and right; perforations through right  
*Quantity:* 500,000  
*Paper:* white  
*Watermark:* none  
*Perforations:* 13½  
*Margins:* producer's name at bottom center  
*Purpose:* publicize the malaria eradication campaign  
*Sub-topics:* mosquito, campaign emblem  
*Notes:* see Portuguese Colonies 1962 for presentation folder  
*Price:* A

305

*Checklist:* unused \_ used \_ fdc \_ other \_



*Size:*  
*Quantity:* 10,000  
*Notes:*  
*Price:* E

305 Pane of 50

*Checklist:* \_

**APRIL 7, 1962**

**P  
O  
R  
T  
U  
G  
U  
E  
S  
E  
  
G  
U  
I  
N  
E  
A**

**•**

**1  
9  
6  
2**

# FIRST DAY CANCELLATIONS



Size: 28 mm  
Notes:

**BS-1** *Bissau*

P  
O  
R  
T  
U  
G  
U  
E  
S  
E  
  
G  
U  
I  
N  
E  
A  
  
•  
  
1  
9  
6  
2

**FIRST DAY CANCELLATIONS**


**P  
O  
R  
T  
U  
G  
U  
E  
S  
E  
  
G  
U  
I  
N  
E  
A**

**•**

**1  
9  
6  
2**

# FIRST DAY CACHETS

P  
O  
R  
T  
U  
G  
U  
E  
S  
E  
  
G  
U  
I  
N  
E  
A  
  
•  
  
1  
9  
6  
2

<p>First Day Cover - Premier Jour d'Emission</p>  <p>Le Monde uni contre le Paludisme</p>	<p>Type: <b>PG-1</b>          Producer: Cubells          Size: 73 x 84 mm          Notes: intended for issue from Madagascar; black bar over country name</p>	

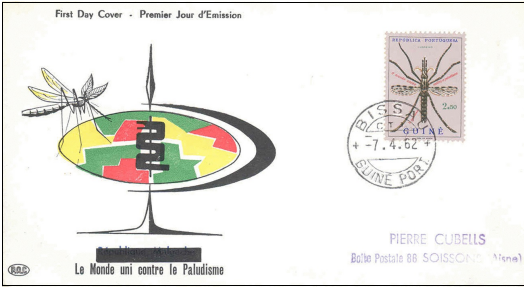
**FIRST DAY CACHETS**

**P  
O  
R  
T  
U  
G  
U  
E  
S  
E  
  
G  
U  
I  
N  
E  
A**

**•**

**1  
9  
6  
2**

# FIRST DAY USAGE



Cancel: BS-1  
 Cachet: PG-1  
 Size: 165 x 91 mm  
 Notes:  
 Price: E

1

Checklist: \_\_

P  
O  
R  
T  
U  
G  
U  
E  
S  
E  
.  
G  
U  
I  
N  
E  
A  
.  
1  
9  
6  
2

**FIRST DAY USAGE**

**P  
O  
R  
T  
U  
G  
U  
E  
S  
E  
  
G  
U  
I  
N  
E  
A**

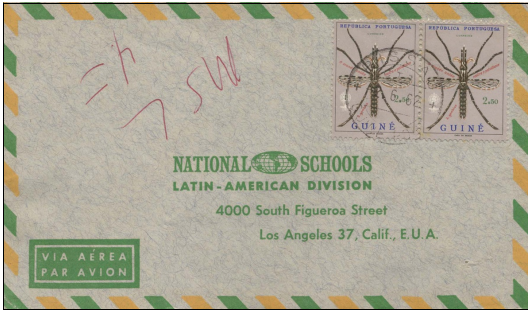
**•**

**1  
9  
6  
2**



# OTHER USAGE

P  
O  
R  
T  
U  
G  
U  
E  
S  
E  
  
G  
U  
I  
N  
E  
A  
  
•  
  
1  
9  
6  
2



*Cancel:* Bissau: June 2, 1962  
*Notes:* 305 pair on postal use cover  
*Price:* E

**A**

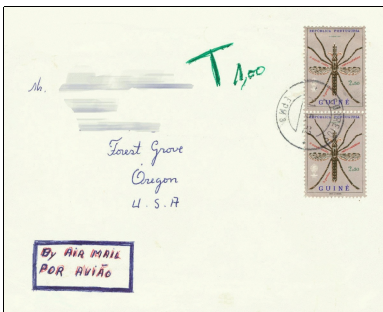
*Checklist:* \_\_



*Cancel:* Bissau: June 13, 1962  
*Notes:* 305 pair on postal use cover  
*Price:* D

**B**

*Checklist:* \_\_



*Cancel:* EPM 8: May 21, 1962  
*Notes:* pair on postal use cover with postage due notation  
*Price:* D

**C**

*Checklist:* \_\_



*Cancel:* EPM 8: July 9, 1962  
*Notes:* pair on postal use cover  
*Price:* D

**D**

*Checklist:* \_\_

# OTHER USAGE

P  
O  
R  
T  
U  
G  
U  
E  
S  
E  
  
G  
U  
I  
N  
E  
A  
.  
  
1  
9  
6  
2



*Cancel:* Bissau: May 17, 1962  
*Notes:* 305 x3 on registered cover to U.S.A.  
*Price:* D

**E**

*Checklist:* \_\_